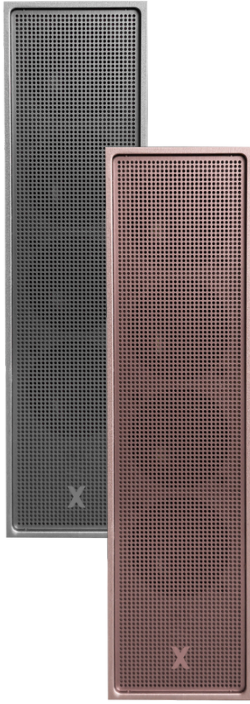


S P E C S



XSCACE

Proprietary Tech



Nano
Resonance



PrecisionXover
Array



AeroFrame
Chassis



PowerDense
Dynamics

XSCACE

CANE

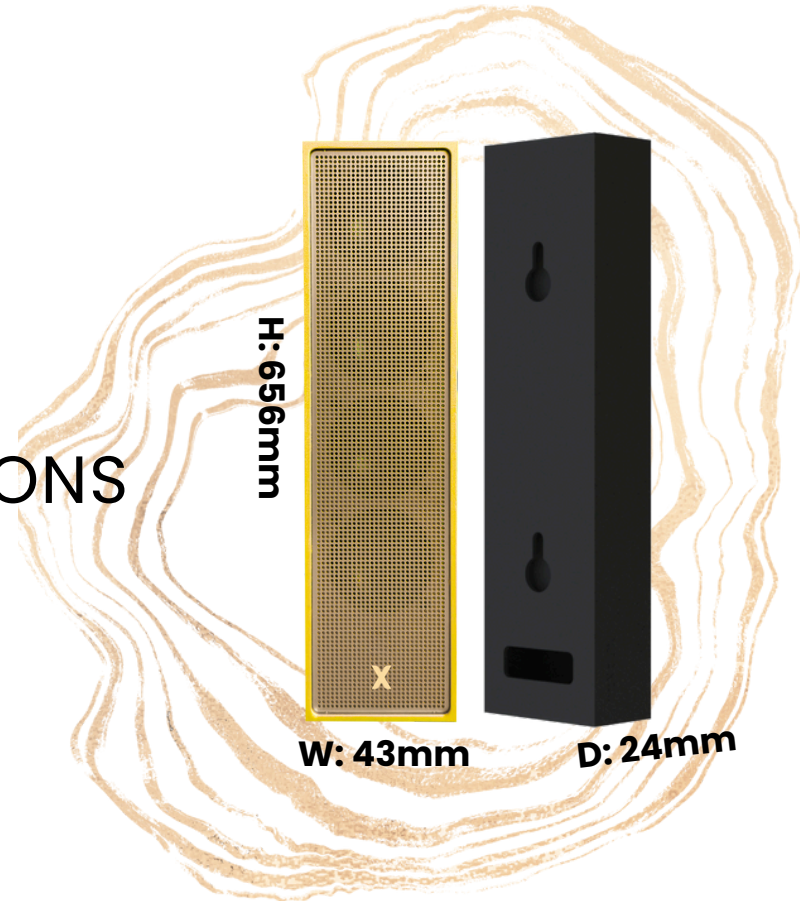
Contact: support@xscace.com

*All measurements made at Canadian Audio Labs
Facility

Updated October 2024

CANE

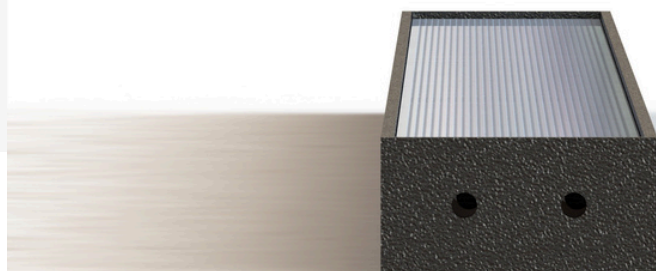
DIMENSIONS



DRIVER: 4 X 1.25" NEODYMIUM WOOFERS,
RUBBER EDGE

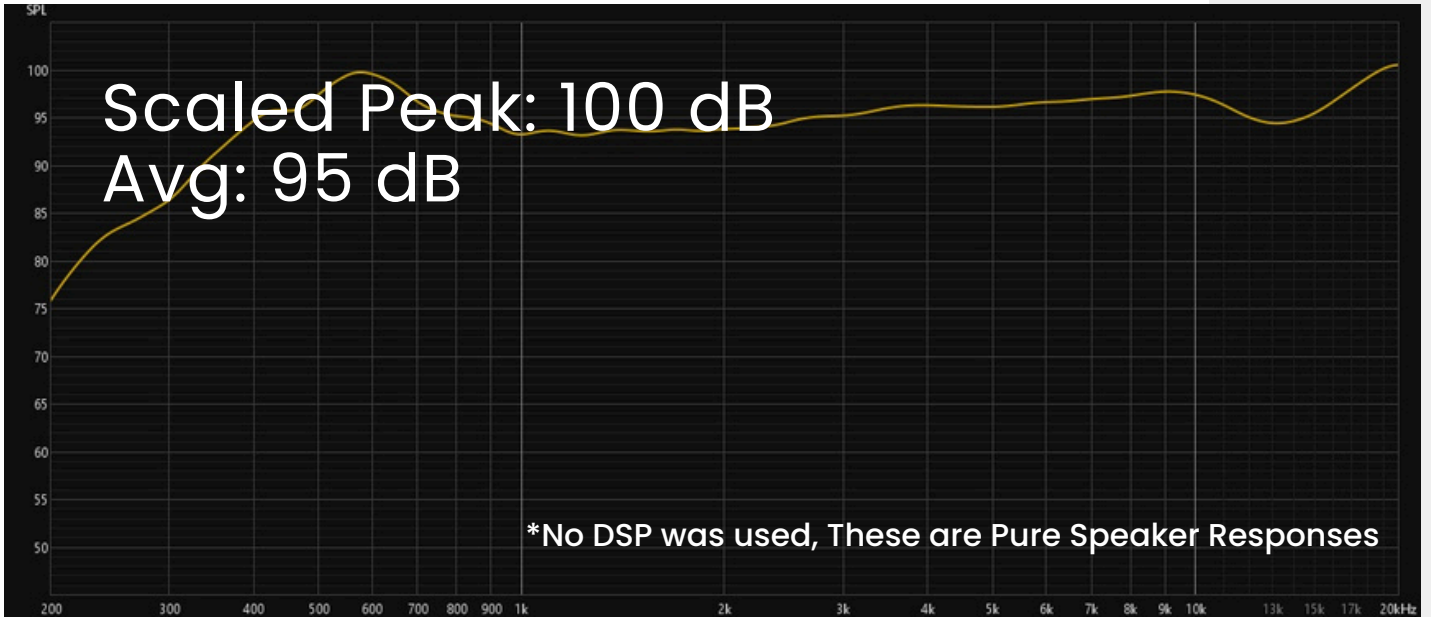
TOTAL MASS: 0.2 KGS

HOUSING MATERIAL: AEROSPACE ALUMINIUM

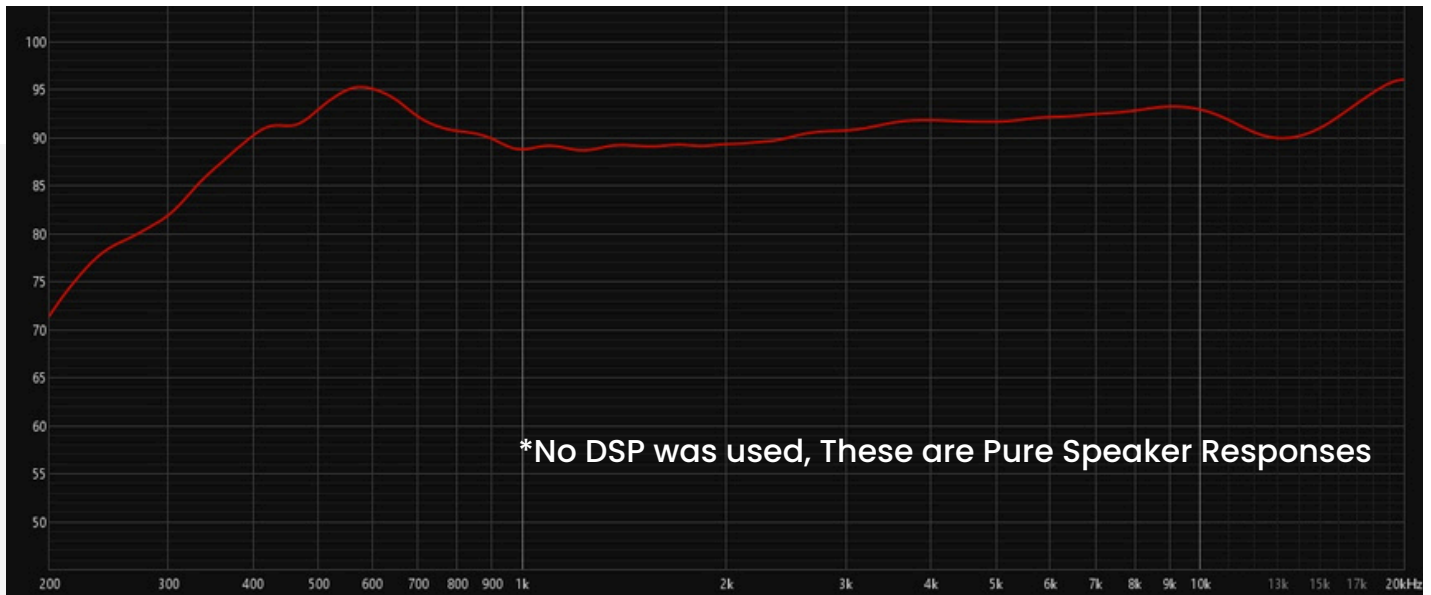


CANE

SENSITIVITY



FREQUENCY RESPONSE

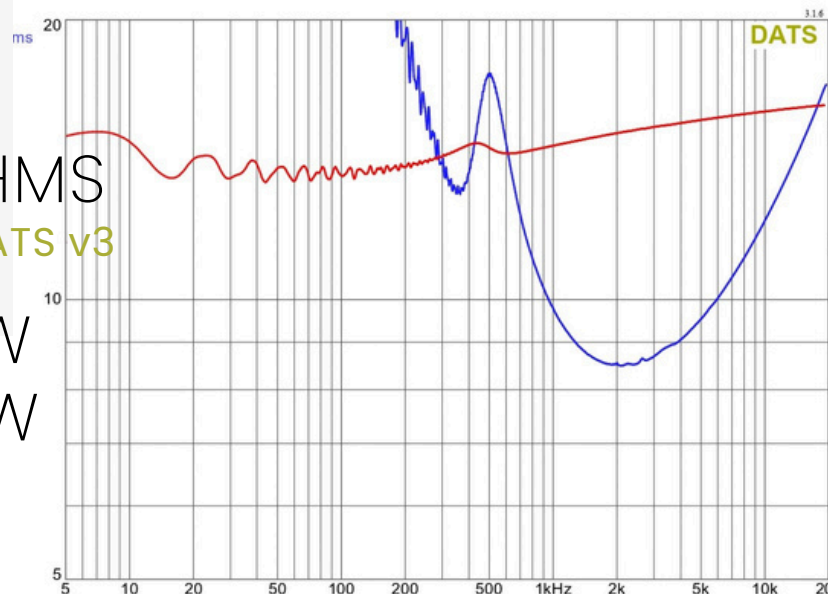


IMPEDANCE: 8 OHMS

*Measurement made on DATS v3

POWER RMS: 50 W

POWER MAX: 60 W



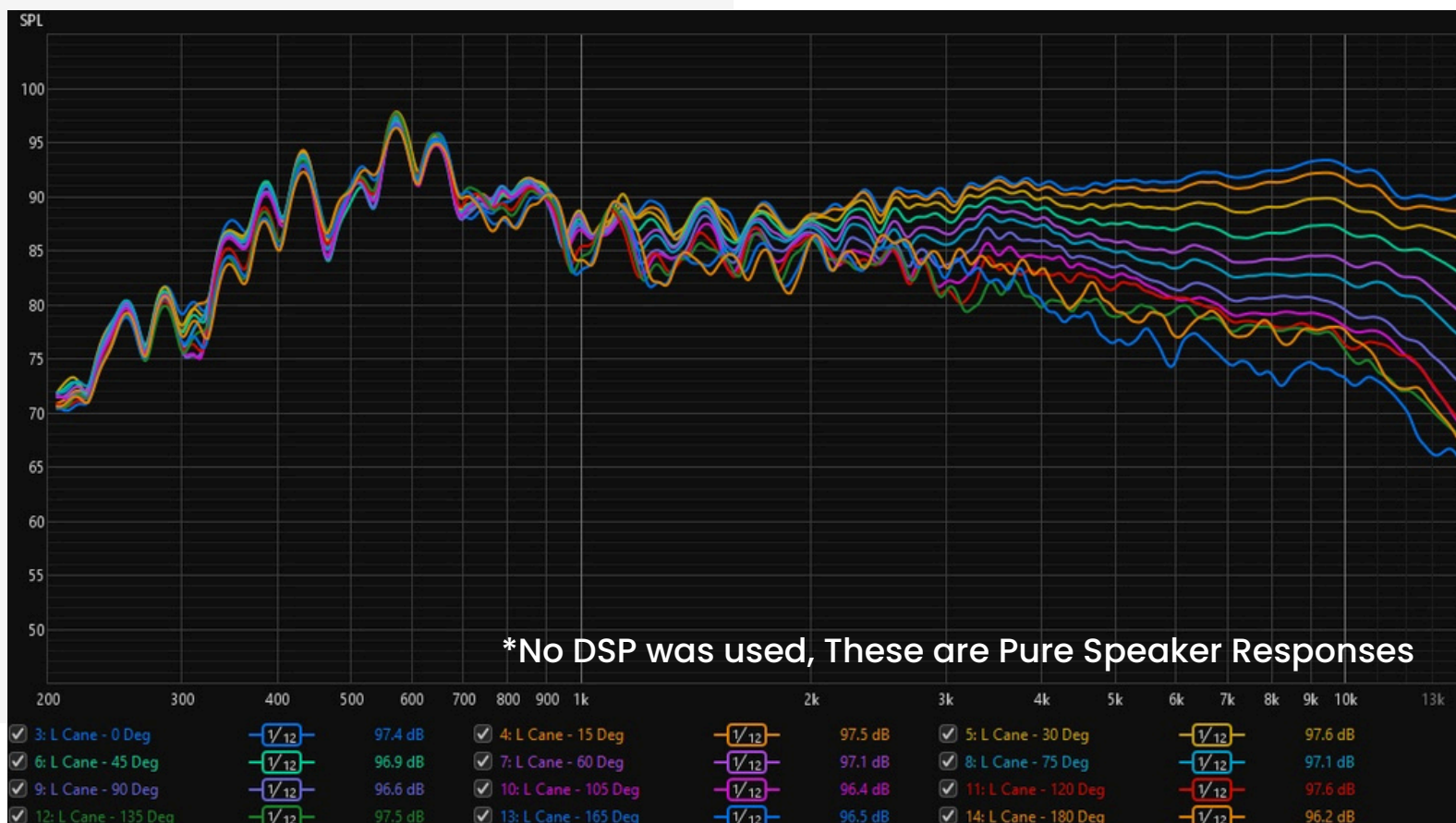
CANE

DIRECTIVITY & COVERAGE

H: 140°
V: 25°



0 - 180 DEGREES



CANE

SPEAKER THROW



USING INVERSE SQUARE LAW

$$\text{SPL}(\text{UNKNOWN DIST}) = \text{SPL}(\text{KNOWN DIST}) - 20 \cdot \text{LOG}_{10}(\text{UNKNOWN DIST} / \text{KNOWN DIST})$$

