

S P E C S



XSCACE

Proprietary Tech



Nano
Resonance



PrecisionXover
Array



PowerDense
Dynamics

XSCACE

GHOST

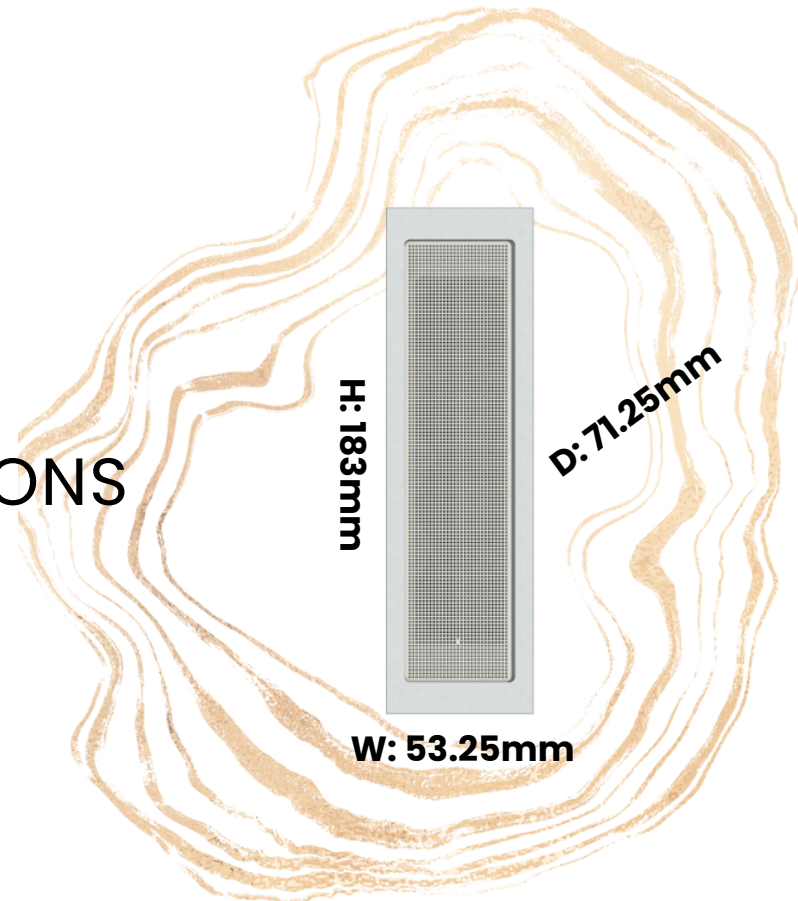
Contact: support@xscace.com

*All measurements made at Canadian Audio Labs
Facility

Updated February 2024

GHOST

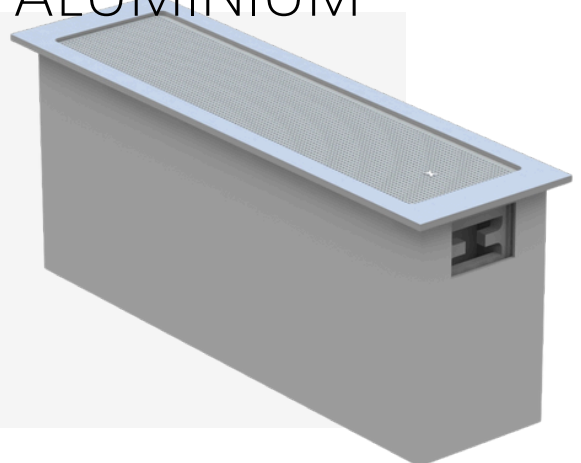
DIMENSIONS



DRIVER: 4 X 1.25" NEODYMIUM WOOFERS | 1 X GLASS WOOFER

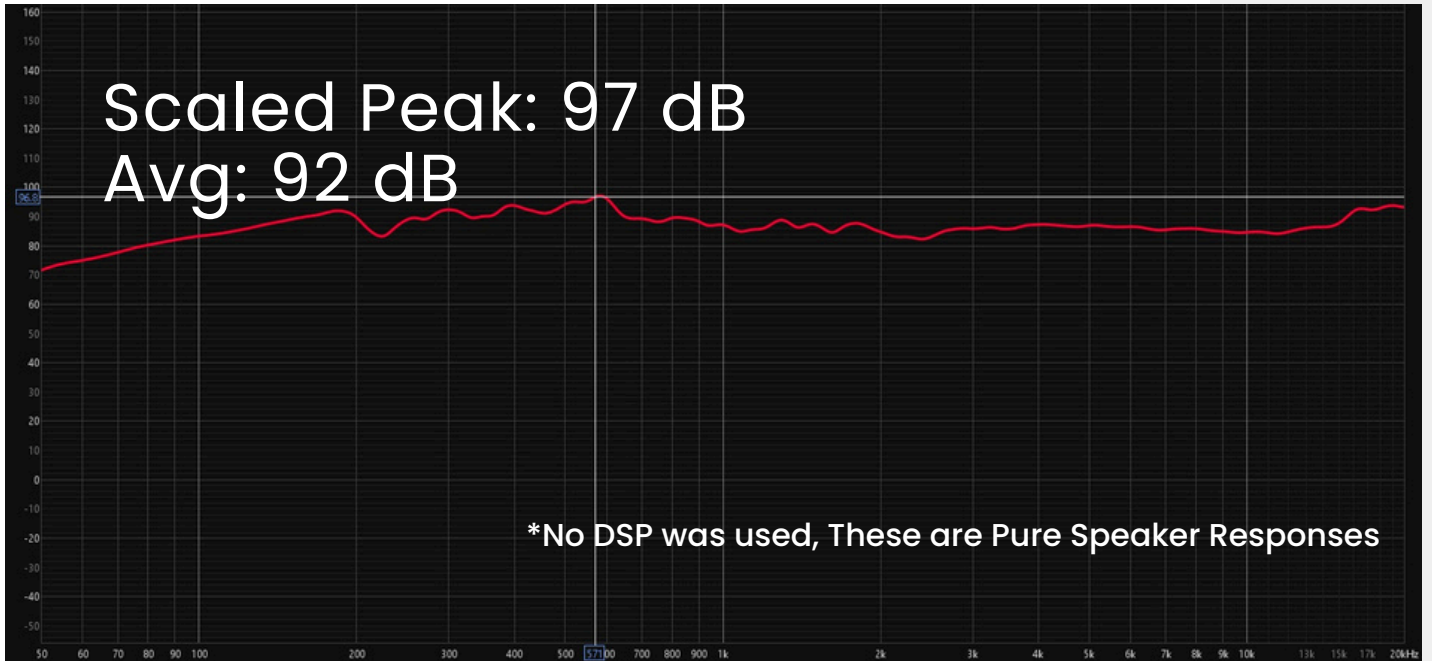
TOTAL MASS: 0.3 KGS

HOUSING MATERIAL: PLA | ALUMINIUM

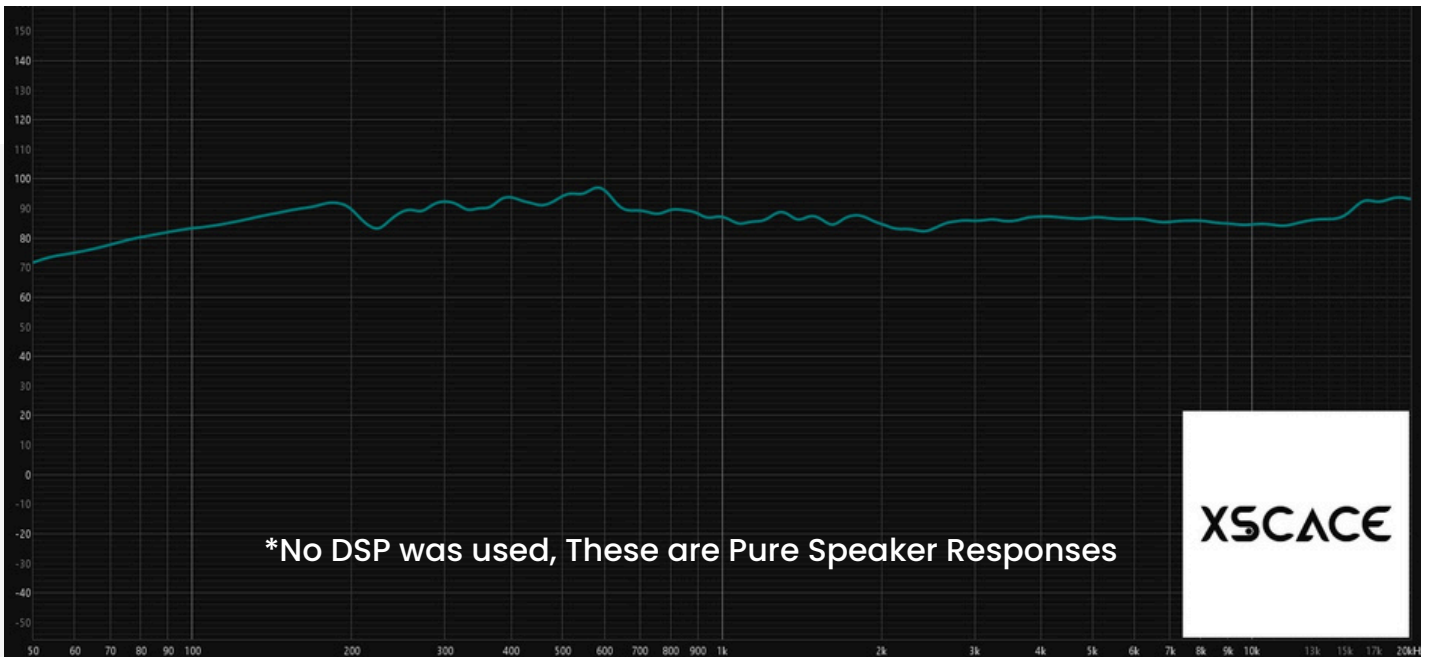


GHOST

SENSITIVITY



FREQUENCY RESPONSE

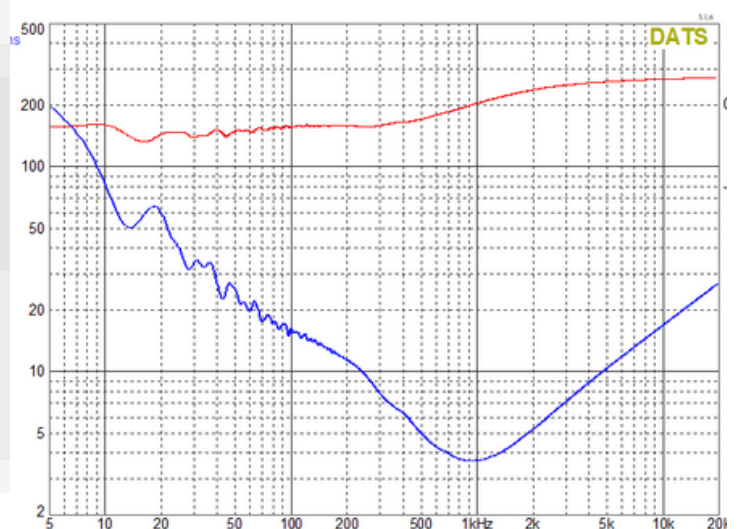


IMPEDANCE: 4 OHMS

*Measurement made on DATS v3

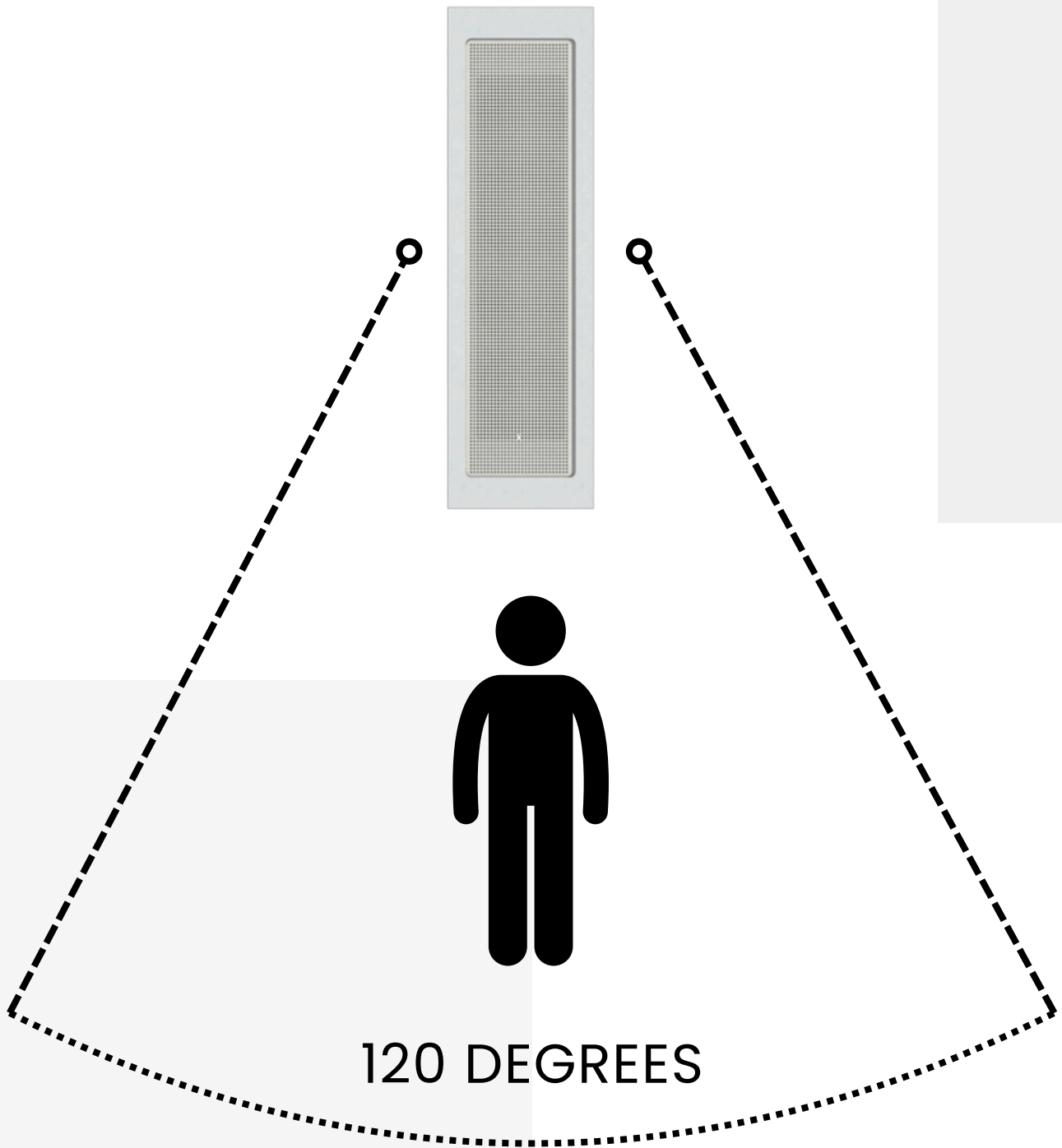
POWER RMS: 70 W

POWER MAX: 80 W



GHOST

DIRECTIVITY & COVERAGE



GHOST

SPEAKER THROW



USING INVERSE SQUARE LAW

$$\text{SPL}(\text{UNKNOWN DIST}) = \text{SPL}(\text{KNOWN DIST}) - 20 \cdot \text{LOG}_{10}(\text{UNKNOWN DIST} / \text{KNOWN DIST})$$

