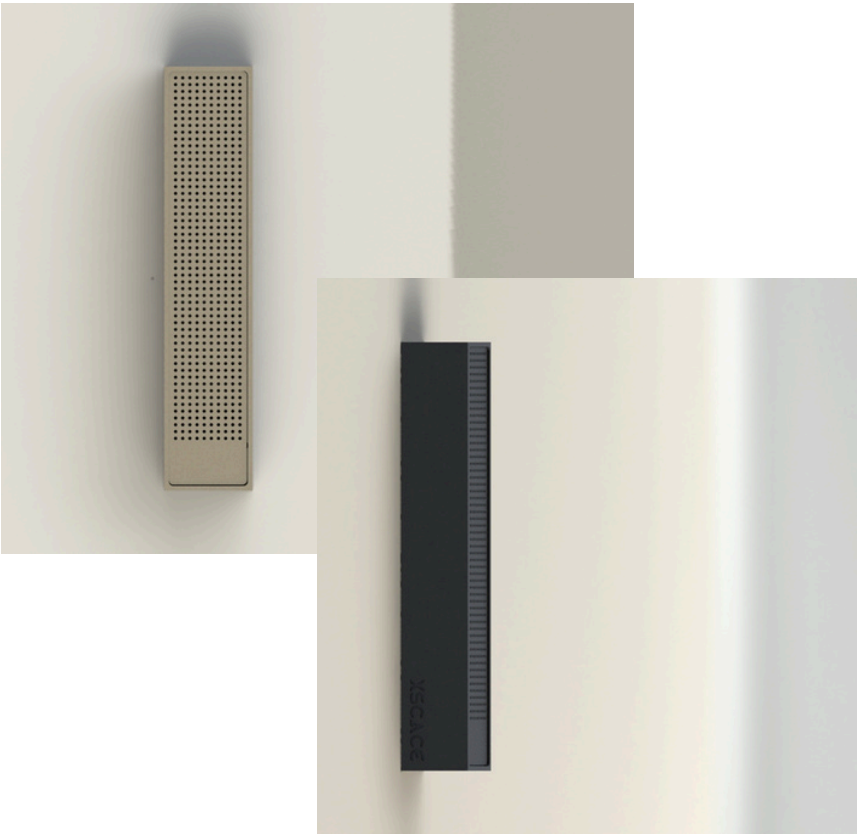


S P E C S



XSCACE

Proprietary Tech



Nano
Resonance



PrecisionXover
Array



AeroFrame
Chassis



PowerDense
Dynamics

XSCACE

BONSAI

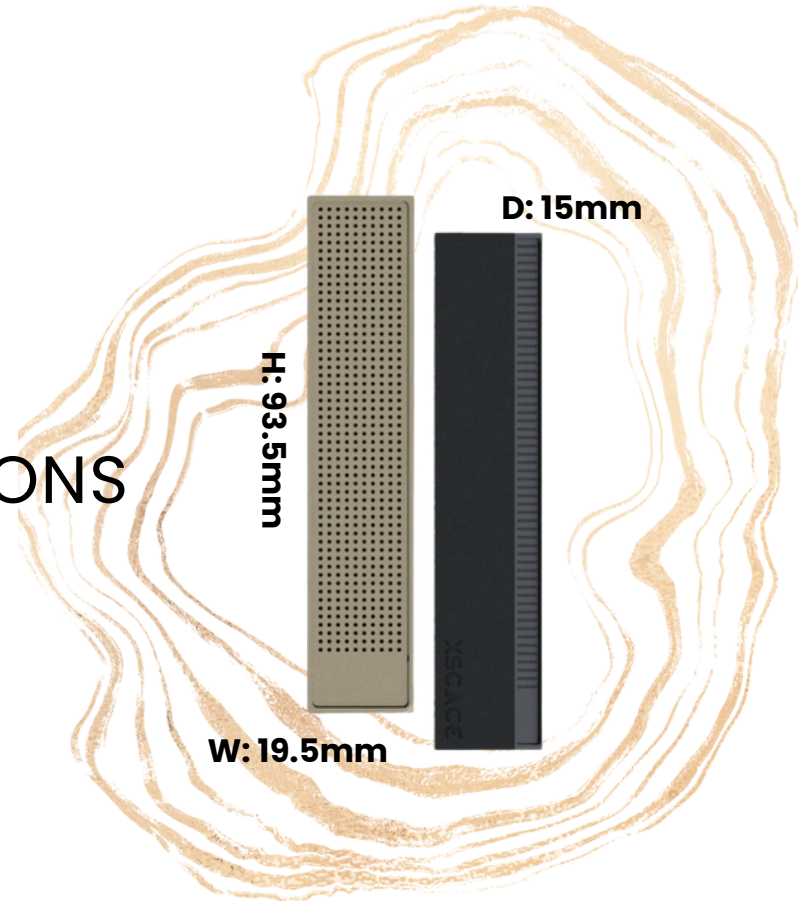
Contact: support@xscace.com

*All measurements made at Canadian Audio Labs
Facility

Updated Nov 2024

BONSAI

DIMENSIONS



DRIVER: QUAD POWER DENSE CUSTOM
WOOFERS

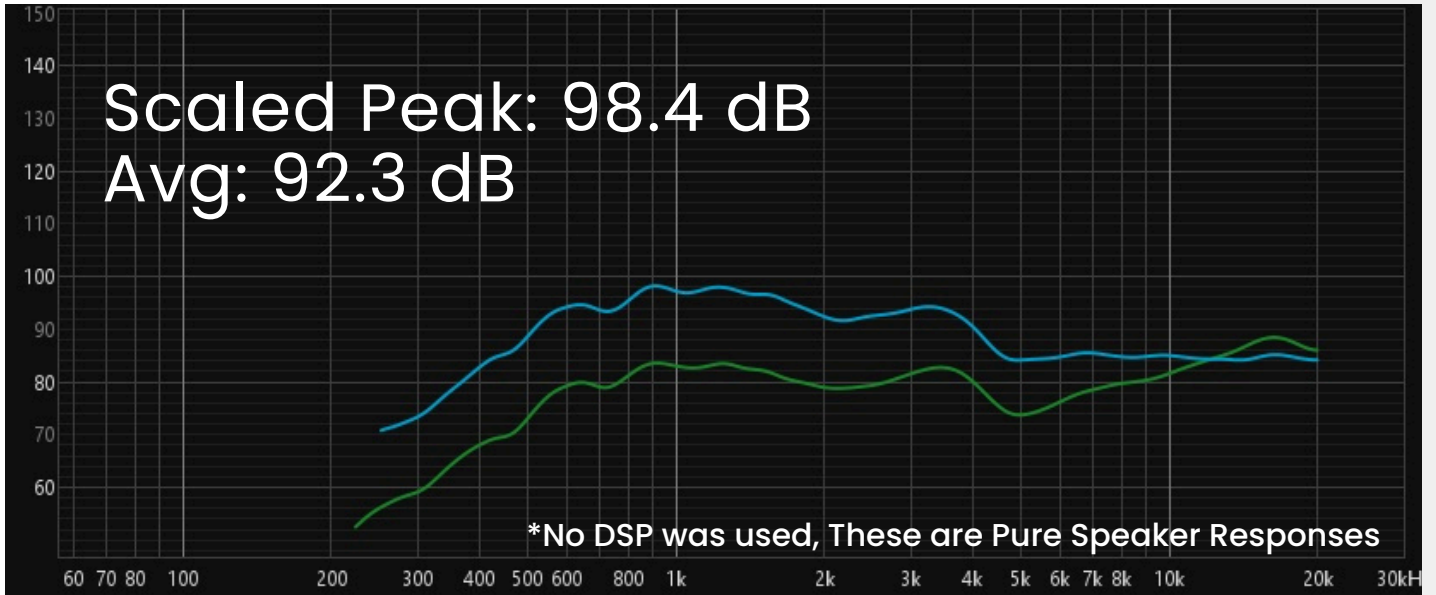
TOTAL MASS: 0.1 KGS

HOUSING MATERIAL: AEROSPACE
ALUMINIUM

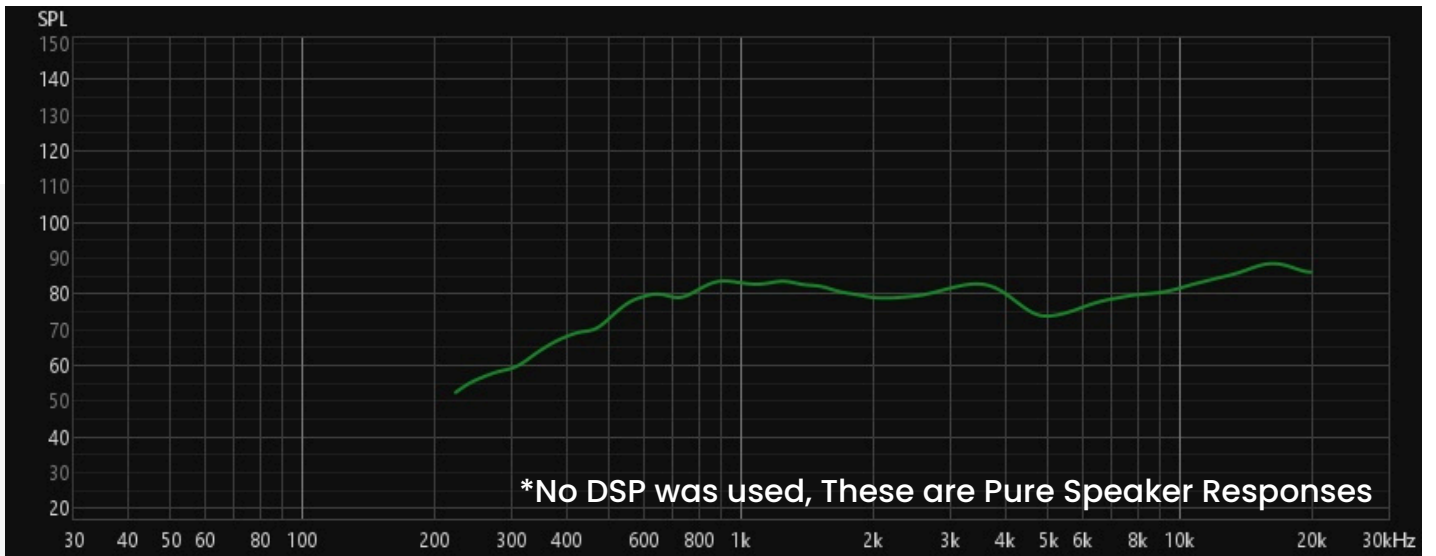


BONSAI

SENSITIVITY



FREQUENCY RESPONSE

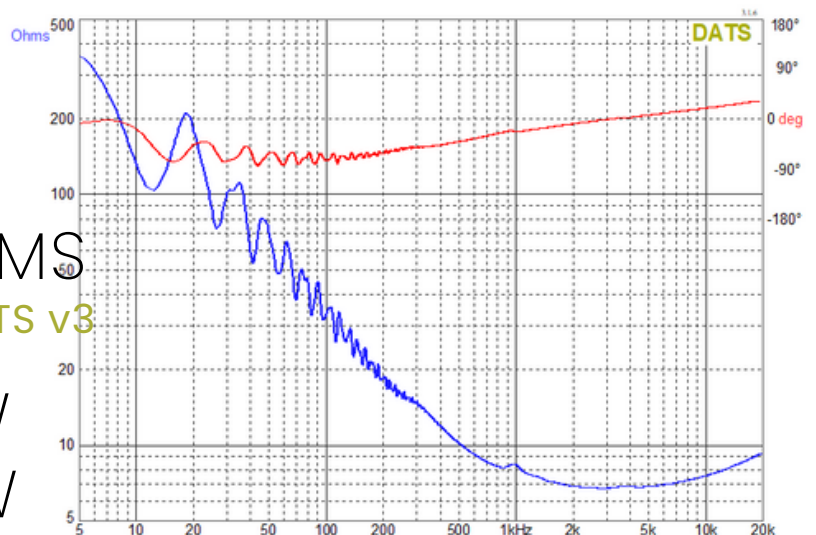


IMPEDANCE: 8 OHMS

*Measurement made on DATS v3

POWER RMS: 40 W

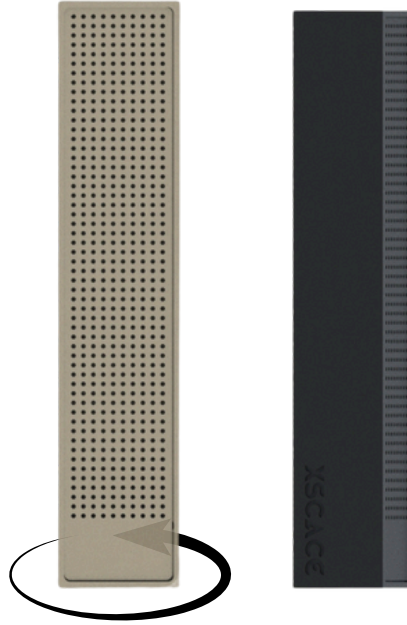
POWER MAX: 50 W



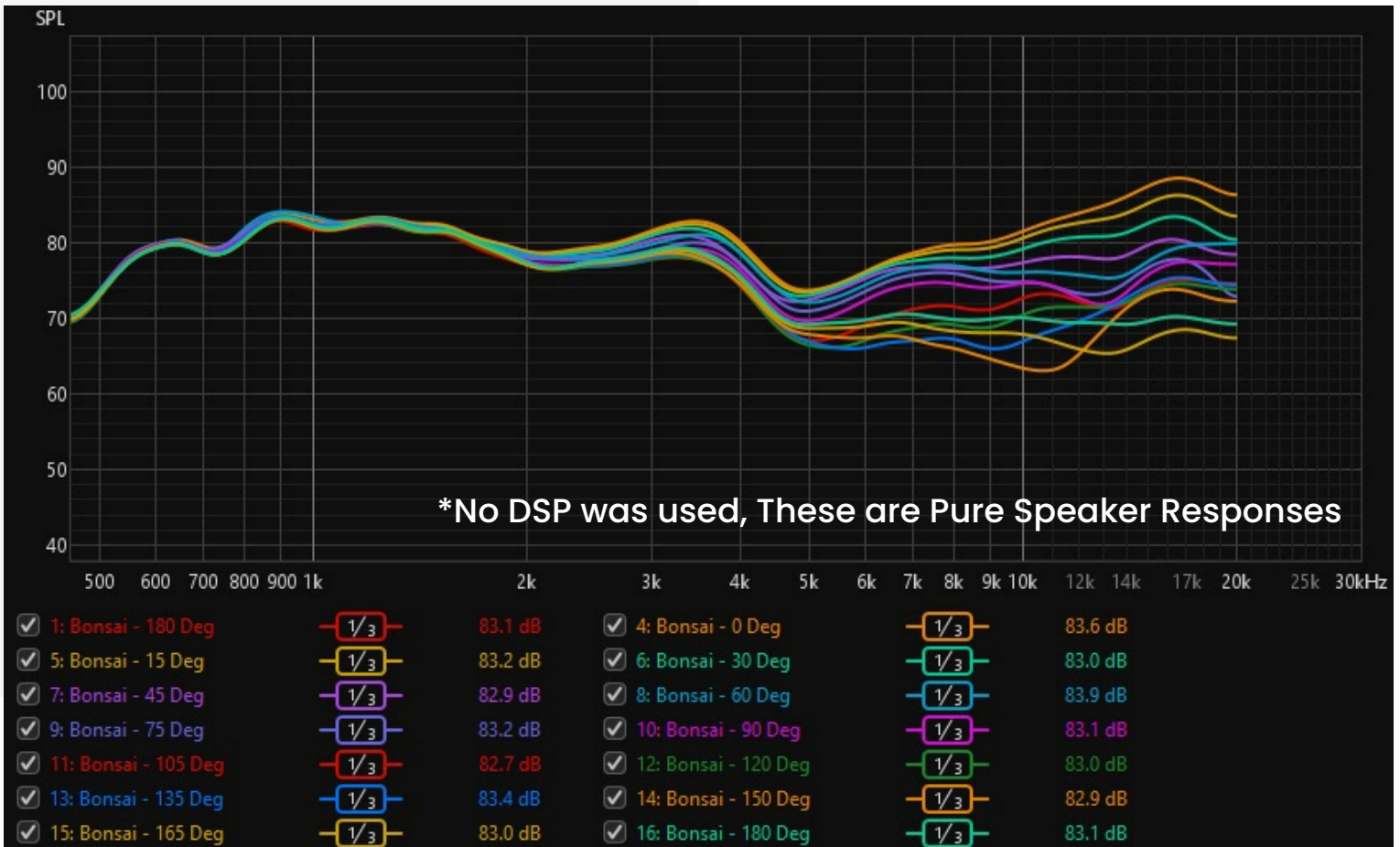
BONSAI

DIRECTIVITY & COVERAGE

V: 40°
H: 140°

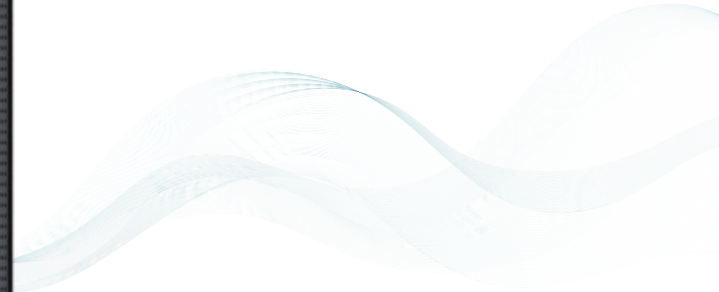


0 - 180 DEGREES



BONSAI

SPEAKER THROW



USING INVERSE SQUARE LAW

$$\text{SPL}(\text{UNKNOWN DIST}) = \text{SPL}(\text{KNOWN DIST}) - 20 \cdot \text{LOG}_{10}(\text{UNKNOWN DIST} / \text{KNOWN DIST})$$

